

# SHOULD A NUCLEAR POWER PLANT BE BUILT IN RIVERWOOD?



# WHAT'S GOING ON?

- ▶ Atomic Energy Inc, wants to build a nuclear power plant in a town called Riverwood.
- ▶ There is currently a coal-fired plant in the area that uses coal from local mines.
- ▶ The Atomic Safety Licensing Board (ALSB), at part of the U.S. Nuclear Regulatory Commission, must hold a public hear to allow all interested parties to voice their positions.
- ▶ This will determine if Atomic Energy Inc. will be granted a COL (Combined Construction and

# WHAT'S THE SCHEDULE?

- ▶ Choose roles (Monday, January 8)
- ▶ Research (Monday, Jan 8 - Tuesday, Jan 16)
- ▶ Presentation (Wed, January 17 - Mon Jan22)
- ▶ Rebuttal (Tues, January 23)
- ▶ Follow up letter to CNN  
(DUE end of hour of final)



# WHO ARE THE PLAYERS?



# Atomic Safety Licensing Board





# Atomic Safety and Licensing Board Panel

## WHAT IS YOUR ROLE?

- You are a member of the Atomic Safety and Licensing Board.
- You will need to listen to the various groups and decide if a COL (Combined Construction and Operation License) should be issued.
- You will need to run meeting, maintain order, create an agenda and rules of order, call the meeting to order, keep time and alert groups, present introductory presentation and background information
- **You are a neutral group**

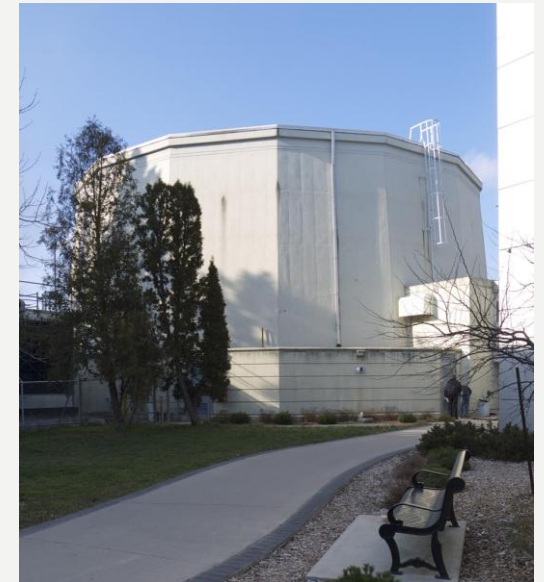
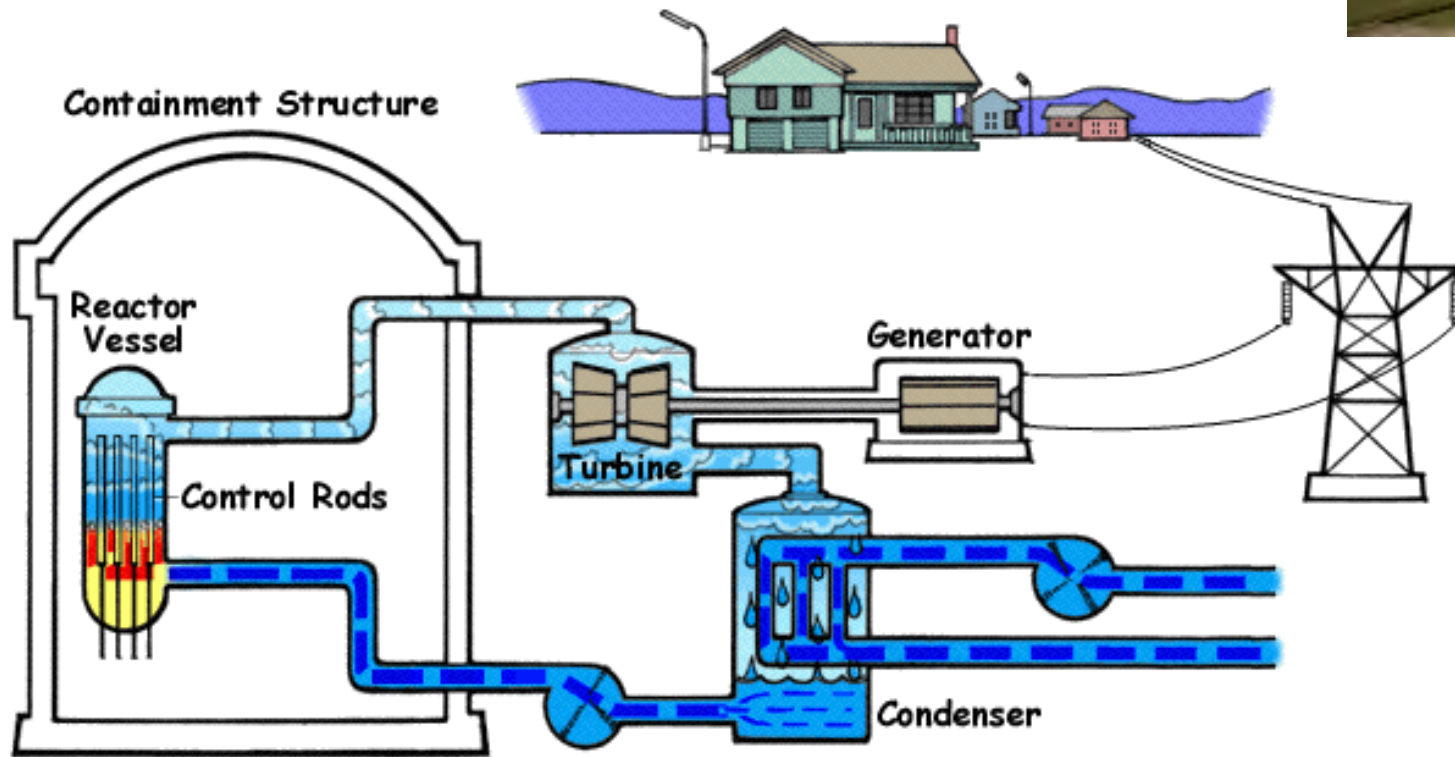
# WHAT DO YOU NEED TO PRESENT?

Create a professional bio which will include education, job description and experience.

Create a presentation that will inform the audience:

1. How a nuclear power plant works
2. The pros and cons associated with it
3. Criteria for approval of COL

# Atomic Energy Inc.





# Atomic Energy Inc.

## WHAT IS YOUR ROLE?

- You work for Atomic Energy Inc and you helped submit the application.
- You are an expert in nuclear reactors
- You are an enthusiastic supporter of nuclear power.
- **You in favor of a new nuclear power plant construction.**

# WHAT DO YOU NEED TO PRESENT?

Create a professional bio which will include education, job description and experience.

Create a presentation that will inform the audience:

1. Describe your position on this issue.
2. Describe your job.
3. Describe the nuclear reactor and how it works.
4. The nuclear reactor type has been approved by NRC, you need to explain why this type of reactor is safe and give examples of safe operation.
5. Explain why this type of reactor is suitable for this facility

# Local Electric Utility





# LOCAL ELECTRIC UTILITY

## WHAT IS YOUR ROLE?

- You are employed by the local electric utility
- Your company is the link between Atomic Inc. and local consumers/
- Your goal is to provide cost effective energy
- **You are in favor of the construction**

# WHAT DO YOU NEED TO PRESENT?

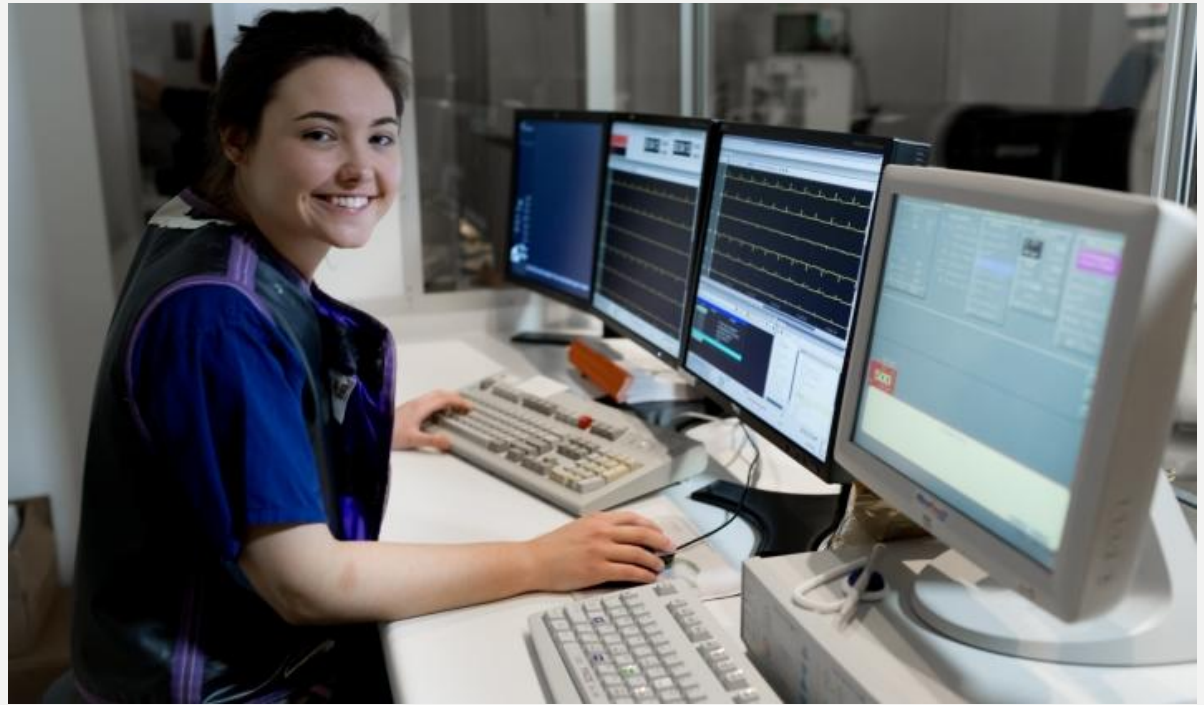
Create a professional bio which will include education, job description and experience.

Create a presentation that will inform the audience:

1. Describe your position on the issue
2. Provide data on operation costs, environmental impact and safety concerns to defend your position.



**KEEP  
CALM  
YOU'RE A  
NUCLEAR  
SCIENTIST**





# **NUCLEAR SCIENTIST**

## **WHAT IS YOUR ROLE?**

- You are a nuclear scientist.
- You are an enthusiastic supporter of nuclear power.
- You in favor of a new nuclear power plant construction.

# WHAT DO YOU NEED TO PRESENT?

Create a professional bio which will include education, job description and experience.

Create a presentation that will inform the audience:

1. Describe your position on nuclear power.
2. Describe your job.
3. Describe how a nuclear power plant works.
4. Describe the benefits of nuclear power
5. Explain why you are in favor of the construction.

# Climate Change Activist/ Environmentalism in Favor





# **Climate Change Activist/ Environmentalist in Favor**

## **WHAT IS YOUR ROLE?**

You are worried about climate change and believe nuclear energy is a viable non CO<sub>2</sub> energy source.

You need to understand how CO<sub>2</sub> adds to climate change

- **You in favor of a new nuclear power plant construction.**

# WHAT DO YOU NEED TO PRESENT?

Create a professional bio which will include education, job description and experience.

Create a presentation that will inform the audience:

1. Describe your position on the issue
2. Explain how a nuclear power plant is different from a fossil fuel plant
3. Explain climate change and the effect it is having on the planet
4. Explain the benefits of nuclear power.

# Aquatic Biologist/ ENVIRONMENTALIST OPPOSED



# **Aquatic Biologist/ ENVIRONMENTALIST OPPOSED WHAT IS YOUR ROLE?**

You are employed as a biologist / environmentalist

You are concerned for the wildlife, forests and aquatic environments of the world

You study impacts on local environments and animal populations.

You work for an environmental organization such as Greenpeace, World Wildlife Fund, Sierra Club or Audubon Society.

- **You are against the construction of a new nuclear**



# WHAT DO YOU NEED TO PRESENT?

Create a professional bio which will include education, job description and experience.

Create a presentation that will inform the audience:

1. Describe the organization you work for. Include what it stands for, what it does and your job in the organization
2. Explain an environmental impact statement
3. Explain how coal and nuclear energy affect the environment.

# COAL MINERS



# COAL MINERS

## WHAT IS YOUR ROLE?

- You are employed by a coal mining company
- You want to provide cost effective energy
- You are worried about your job
- You are against the nuclear plant

# WHAT DO YOU NEED TO PRESENT?

Create a professional bio which will include education, job description and experience.

Create a presentation that will inform the audience:

1. Describe your position on the issue
2. Describe your job as a coal worker
3. Describe how a coal fired plant works and how it is essential





# **PUBLIC HEALTH COMMISSION**

## **WHAT IS YOUR ROLE?**

- You are employed by the Public Health Commission
- You are concerned how nuclear plant emissions and nuclear waste will affect the health of all people
- **You are against the nuclear plant**

# WHAT DO YOU NEED TO PRESENT?

Create a professional bio which will include education, job description and experience.

Create a presentation that will inform the audience:

1. Your job in Public Health
2. What do public health workers do?
3. What are the health effects of associated with nuclear emissions and nuclear waste?
4. What kind of medical care will be needed?
5. What kind of costs are expected for this treatment?



# Coal Fired Plant Operator





# Coal Fired Plant Operator

## WHAT IS YOUR ROLE?

You work in a coal fired power plant and are concerned about job security

You live in a state that has coal mines

You are worried about governmental regulations due to greenhouse emissions

- **You are against the nuclear plant**

# WHAT DO YOU NEED TO PRESENT?

Create a professional bio which will include education, job description and experience.

Create a presentation that will inform the audience:

1. Describe your position on the issue
2. Describe your job in a coal powered generating station.
3. Describe how a coal fired plant works and how it is different from a nuclear plant.
4. Explain problems with a nuclear plant.

# US EPA



## Action for the American people



- ✓ Cleaning up and reusing contaminated sites
- ✓ Investing in water infrastructure
- ✓ Communicating with those who need our help
- ✓ Cleaner air, water and land for every American



#EPABack2Basics



# US EPA

## WHAT IS YOUR ROLE?

- You work for the U.S. EPA as an environmental scientist.
- You are responsible for approving the environmental impact statement for the new plant.
- You are an undecided group which means you need to research and decide if you are in favor or against the construction of the nuclear plant.



# WHAT DO YOU NEED TO PRESENT?

Create a professional bio which will include education, job description and experience.

Create a presentation that will inform the audience:

1. Describe your job at the EPA.
2. Explain what the EPA does.
3. Explain an environmental impact statement.
4. Explain how a nuclear power plant versus a coal power plant would affect the environment.

# Mayor and City Council Members



# Mayor and City Council Members

## WHAT IS YOUR ROLE?

- The Mayor and City Council have been asked to speak at the Hearing.
- You live in a small community and want to improve the business and way of life for your residents.
- You are an undecided group which means you need to research and decide if you are in favor or against the construction of the nuclear plant.

# WHAT DO YOU NEED TO PRESENT?

Create a professional bio which will include education, job description and experience.

Create a presentation that will inform the audience:

1. Describe your community. This includes a community profile and demographics
2. Describe your job
3. Describe how the plant will improve the community and how construction could disrupt the way of life your community now enjoys.



# RESIDENTIAL CONSUMER



Consumer Protection Council



# RESIDENTIAL CONSUMER

## WHAT IS YOUR ROLE?

- You live 30 miles from the proposed nuclear plant.
- You want cheap electricity and goods
- You are an undecided group which means you need to research and decide if you in favor or against the construction of the nuclear plant.

# WHAT DO YOU NEED TO PRESENT?

Create a professional bio which will include education, job description and experience.

Create a presentation that will inform the audience:

1. What is the cost of electricity in the area?
2. Change in cost if a nuclear plant is built.
3. Reasons why nuclear power is more cost efficient.

# PARENTS





# PARENTS

## WHAT IS YOUR ROLE?

- You live in Riverwood, USA.
- You have children and are worried about a nuclear plant in your town.
- You want cheap electricity and goods
- You are an undecided group which means you need to research and decide if you in favor or against the change.

# WHAT DO YOU NEED TO PRESENT?

Create a professional bio which will include education, job description and experience.

Create a presentation that will inform the audience:

1. Describe your family
2. Describe the negative and positive effects of nuclear energy. This must include health risks associated with radiation for adults and children, cost of electricity and previous accidents at all types of power plants

# FINANCIAL INSTITUTION



ILLUSTRATION: PAUL SCHULENBURG/GETTY IMAGES

# FINANCIAL INSTITUTION

## WHAT IS YOUR ROLE?

- You work at a financial organization (bank)
- Atomic Energy, Inc has asked to borrow money from your bank.
- Your job is to determine if there is any financial risk to your shareholders.
- You are an undecided group which means you need to research and decide if you are in favor or against the construction of the nuclear plant.



# WHAT DO YOU NEED TO PRESENT?

Create a professional bio which will include education, job description and experience.

Create a presentation that will inform the audience:

1. What does your bank do? (loan money? Your clients?)
2. Explain what the economics of nuclear power depends on
3. Explain generation cost vs construction cost when determining the feasibility
4. Explain costs and benefits to local communities and industry

[http://www.youtube.com/watch?v=\\_UwexvaCMWA](http://www.youtube.com/watch?v=_UwexvaCMWA)



English 3D Animation

